

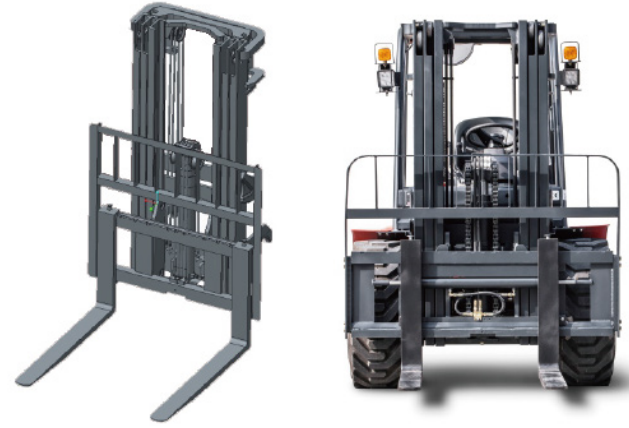

**ROUGH TERRAIN**

# FD35RT

## COMPACT 4WD

### 3.5 TON ROUGH TERRAIN DIESEL

Compact 4 Wheel Drive						
General	1	Model	FD35T-C4WE3			
	2	Power type	Diesel			
		Optional type				
	3	Rated capacity	kg	3500		
Characteristic/Dimension	4	Load centre	mm	500		
	5	Free lift height	mm	3000		
	6	Free lift	mm	165		
	7	Fork size	LxWxT	mm	1220x122x45	
	8	Fork regulating range	Min./Max.	mm	250-1500	
	9	Mast tilt angle	F/R	Deg	10/12	
	10	Front overhang	mm	601		
	11	Rear overhang	mm	600		
	12	Min. ground clearance (drive steering axle)	mm	219		
		Min. ground clearance (chassis) (Unladen/Laden)	mm	224/230		
		Min. ground clearance (mast) (Unladen/Laden)	mm	270/250		
		Ground clearance (drawbar pin)	mm	430		
		Height from seat surface to overhead guard inner side	mm	1043		
	Overall dimensions	13		Length to face of fork (without fork)	mm	3081
		14		Overall width	mm	1600
		15		Mast lowered height	mm	2330
		16		Mast extended height (with backrest)	mm	4305
17		Overhead guard height		mm	2276	
18		Turning radius		mm	3120	
Min. right angle stacking aisle width	19	Pallet size a <sub>1</sub> =1000, b <sub>1</sub> =1200	mm	4921		
			Pallet size a <sub>2</sub> =1200, b <sub>2</sub> =800	mm	4871	
	20	Min. right angle stacking aisle width (pallet size a <sub>1</sub> =1200, b <sub>1</sub> =1200)	mm	2725		
Performance	21	Speed	Type	WV3AW(6)3	WE3	
	22		Travel (Unladen/Laden)	km/h	18/17	19/18
	23		Lifting (Unladen/Laden)	mm	480/450	510/485
	24		Lowering (Unladen/Laden)	mm	500/450	500/450
	25	Max. Drawbar pull (Unladen/Laden)	KN	27	38	
Tyre	25	Max. Gradeability (Unladen/Laden)	%	30	45	
	26	Braking distance		m	< 6	
	27	Tyre	Front		14-17.5L-14PR	
			Rear		10.0/75-15.3	
		Tyre pressure (Front/Rear)		MPa	0.55/0.55	
	28	Tread	Front	mm	1250	
			Rear	mm	1190	
	Ground clearance (Front tyre centre) (Unladen/Laden)		mm	450.5/425		
	Ground clearance (Rear tyre centre) (Unladen/Laden)		mm	370/385		
Weight	30	Wheelbase		mm	1880	
		Self weight		kg	5545	
	32	Weight Distribution	Laden	Front Axle	kg	7872
				Rear Axle	kg	1073
			Unladen	Front Axle	kg	2345
Rear Axle				kg	3100	


**Engine: Yanmar 4TNE98**

Rated output 42.1 kw/2300rpm >

Rated torque 196.3 N.m/1700rpm >



Power & Transmission	36	Battery	Voltage/Capacity	V/Ah	12/90
	37	Engine	Model		4TNE98-BQFLC
	38		Manufacture		YANMAR
	39		Rated output/r.p.m.	Kw	42.1/2300
	40		Rated torque/r.p.m.	N.m	186-206/1700
	41		No. of cylinder		4
	42		Bore x Stroke	mm	98 x 110
	43		Displacement	L	3.318
	44		Fuel tank capacity	L	
	45		Manufacture		China
Transmission	46	Type			FSDT35L
	47	Stage	F/R		2/1
			Operating pressure	MPa	20

