



EC3212

12 TON VIBRATORY SMOOTH DRUM ROLLER

SPECIFICATIONS

TECHNICAL DATA EC 3212-STD

WEIGHT (units)	
• Operating Weight (Kg)	11790
• Weight on Drum (Kg)	6960
• Weight on Tyres (Kg)	4830
• Static Linear Load Front (Kg/Cm)g	32.5

ENGINE	
• Make	KOEL
• Specification	4 Cylinder, Water Cooled, Bharat Stage III (CEV) Emission Norms
• Rated Power	105 HP at 2200 rpm

DRIVE	
• Hydrostatic Drive, Infinitely Variable	All-Wheel

VIBRATION SYSTEM		
	High	Low
• Amplitude (mm)	1.9	0.8
• Frequency (Hz)	33	40
• Centrifugal Force (Kg)	26010	16080
• Total-Applied Force (Kg)	32970	23040

SPEED	
• Working Speed (Km/hr)	0-9
• Travelling Speed (Km/hr)	0-23

GRADEABILITY	
• Max Gradeability (%)	30

STEERING	
	Articulated Hydrostatic Steering
• Steering Angle	±30°
• Oscillation Angle	±10°

BRAKES	
• Service Brake	Hydrostatic
• Parking Brake	Spring applied Hydraulically Released
• Emergency Stop	Hydrostatic Drive & Spring Applied Brake

TYRES	
• 2 Nos. All Weather Pattern	23.1/26-12 PR

SERVICE CAPACITY	
• Fuel Tank Capacity	300 Lts
• Hydraulic Oil Tank Capacity	80 Lts
• Engine Oil	10 Lts
• Engine Coolant	20 Lts
• Transmissions Oil	Axle-15 Lts Torque Hub-3 Lts
• Drum Oil	5 Lts

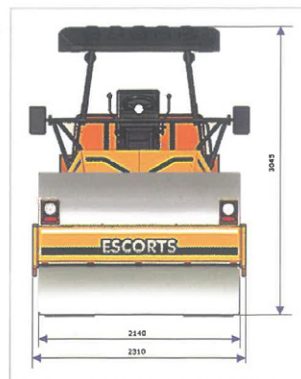
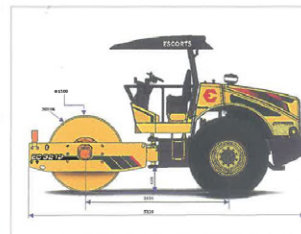
ELECTRICAL SYSTEM	
• Operating Voltage	12V, 150Amh.

STANDARD EQUIPMENT	
• Canopy with Sun Top, Cushioned Seat, Rear View Mirror, Instrument Panel with a range of Control instruments including Hour Meter, Light Equipment, Lifting Eyes, Tool Box, Brake Warning Light.	

SAFETY FEATURES	
• Neutral Start Switch, Air Filter Clog Indicator, Hydraulic Filter Clog Indicator, Audio warning at low oil pressure, Engine shut off at high coolant temp., Reverse Buzzer.	

OPTIONAL FITMENT	
• Operator Cabin, Cold Starting Kit, Engine Cut-off at High Temperature & Low Pressure, Compactbar with frequency meter, Intelligent Compaction System (ICS).	

DIMENSIONS



• Overall Width (mm)	2310
• Overall Length (mm)	5520
• Overall Height (mm)	3045
• Drum Diameter (mm)	1500
• Drum Width (mm)	2140
• Ground Clearance (mm)	435
• Wheel Base (mm)	2820
• Turning Radius-outer/inner (mm)	6480/4340

FEATURES

- Cartridge Type vibration mechanism
- Better compaction forces to achieve desired compaction over wider range of soil grades and layer thickness
- Enhanced dirt holding capacity of Hydraulic filtration system
- Large, comfortable operator Cabin with
 - Front & Rear LED work light for smooth night operations
 - Mobile charger & water bottle holder
 - Anti slip tapes on floor
 - Large Rear view mirrors
 - Mud guard in front to prevent soil coming to cabin area
- IP67 compliant electrical connector for higher reliability

The information contained in this leaflet is intended to be of general nature only. We reserve the right to change specifications without notice. All dimensions and weight are variable within ± 5%.

